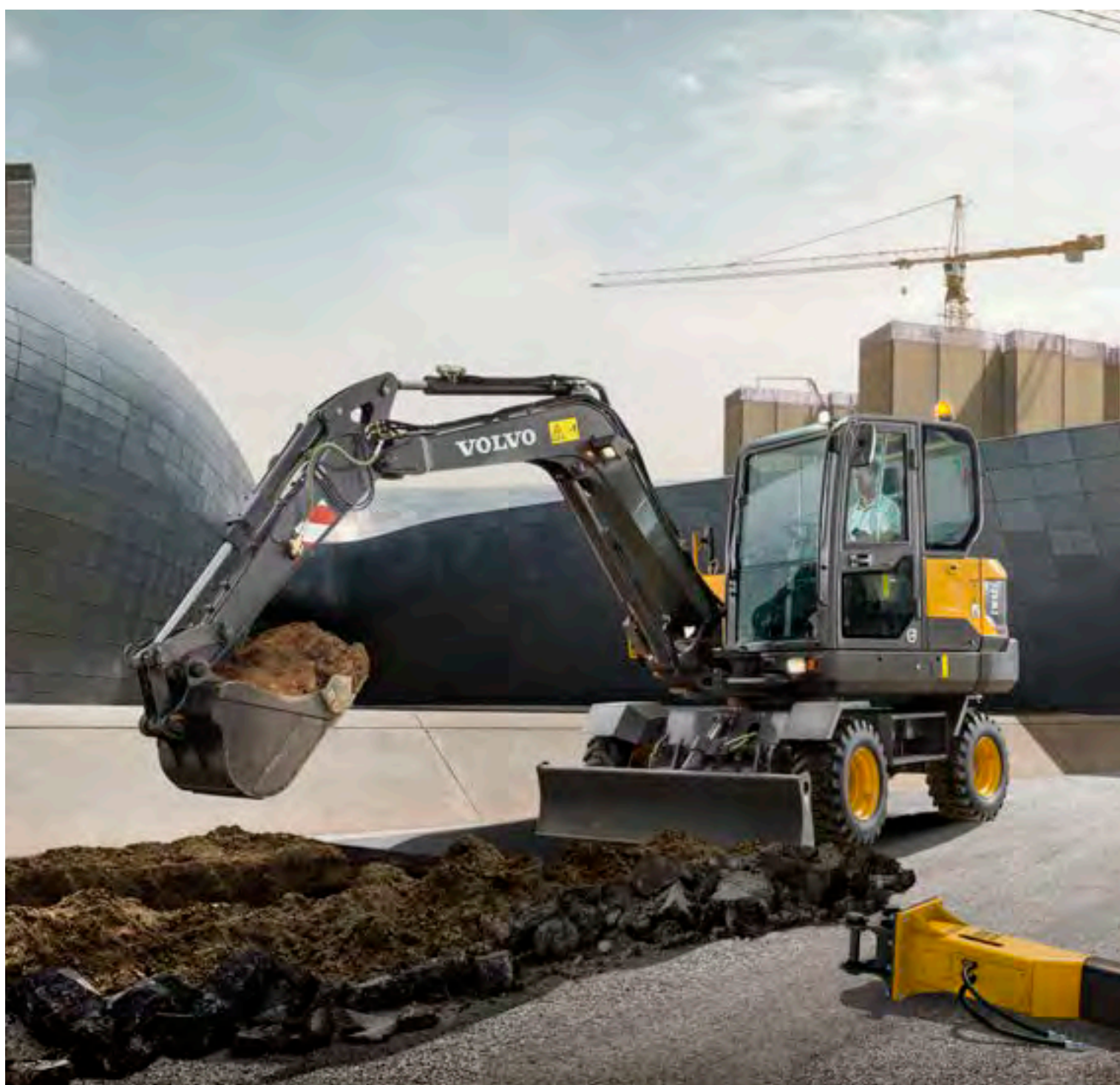




Volvo Construction Equipment

EW60E

Volvo Excavators 5.15-5.85 t 47.3 kW



A passion for performance

At Volvo Construction Equipment, we're not just coming along for the ride. Developing products and services that raise productivity – we are confident we can lower costs and increase profits for industry experts. Part of the Volvo Group, we are passionate about innovative solutions to help you work smarter – not harder.

Helping you to do more.

Doing more with less is a trademark of Volvo Construction Equipment. High productivity has long been married to low energy consumption, ease of use and durability. When it comes to lowering life-cycle costs, Volvo is in a class of its own.

Designed to fit your needs.

There is a lot riding on creating solutions that are suited to the particular needs of different industry applications. Innovation often involves high technology – but it doesn't always have to. Some of our best ideas have been simple, based on a clear and deep understanding of our customers' working lives.



You learn a lot in 180 years.

Over the years, Volvo has advanced solutions that have revolutionized the use of construction equipment. No other name speaks Safety louder than Volvo. Protecting operators, those around them and minimizing our environmental impact are traditional values that continue to shape our product design philosophy.

We're on your side.

We back the Volvo brand with the best people. Volvo is truly a global enterprise, one that is on standby to support customers quickly and efficiently – wherever they are.

We have a passion for performance.



Volvo Trucks



Renault Trucks



Mack Trucks



UD Trucks



Volvo Buses



Volvo Construction Equipment



Volvo Penta



Volvo Financial Services

Space and comfort to work

The EW60E features an innovative cab design for a comfortable and more productive operator environment. Well-designed ergonomics and a modern LCD display give you perfect control in all operations. Plenty of storage space is available for personal belongings.

Operator convenience

Ample storage space is available for operator comfort and convenience. A phone tray, two power sockets, cup holder and three other large storage areas makes the Volvo cab a more convenient working environment.



Operator visibility

All-round visibility is enhanced by thin pillars, large glazed area and a large wiper blade. The rear view camera secures a better view for perfect and safe control through the 7" color LCD display. This ensures there are no blind spots even in the most confined working areas.



Work in comfort

The comfortable and adjustable seat makes it easier for the operator to work hard all day and feel less tired by the end of it. The cab's air conditioning is efficient and in automatic mode, the temperature remains at a set level. Six adjustable vents allow for optimal airflow in the cab.



Ease of control

Control your machine with minimal effort in order to get more done in less time. The keypad groups all controls on the right hand side and the 7" color LCD screen displays all machine information for access to functions through its easy to use menus. Through the hot keys, the operator can directly access pre-set functions for added convenience. The proportional joystick provides excellent grip, and the roller fits your thumb perfectly for easy and precise control.





LARGER CAB



A comfortable working space results in better operation, increasing production and reducing fatigue. The cab design creates space behind the seat, allowing the operator to move more freely. The new generation Volvo Cab features excellent visibility and reduced noise levels.



BOOSTED PERFORMANCE



Do more in less time with outstanding combined digging efforts, powerful travel force, fluid swing force and optimal lifting capacity. The EW60E has been designed to tackle the most challenging job sites and contracts using the powerful Volvo Stage IIIB / Tier 4 final engine and adjustable hydraulic flow. Its well-balanced driveline delivers optimum performance whether working on the job site or on the move.

Power for performance

Climb quick, swing smooth, dig hard and load fast with the EW60E. The traction, swing force and lifting capacity gets you results, fast. This versatile and powerful machine can be tailored for any job and is suitable for a wide range of applications.

Powerful Volvo Stage IIIB / Tier 4 final engine

Give your job site a boost and achieve fast results. Great power and effective cooling ensure optimized performance in any climate. For the ultimate combination of power and performance, the Stage IIIB / Tier 4 final engine helps to push through challenging conditions.



Smooth operation

Smooth combined operations means you can make very accurate and precise movements. With responsive controls the machine does exactly what the operator intends for less fatigue and fluent movement.



Versatility

Perform on any job site, whether you're working in a confined space or major construction area. The machine's compact design, long arm, optional fixed boom and offset boom, long dozer blade, auxiliary hydraulic and thumb piping makes the machine suitable for a wide range of jobs and applications.



Wheeled performance

A top speed up to 30km/h and the four wheel drive allow you to go on and off-road for better mobility. Drive the machine easily between locations and access hard to reach job sites to save time and keep your machine in prime condition.



Profit in your business

The EW60E is designed and built to increase your profitability and keep you working for longer. To reduce your running costs it features excellent service access, convenient maintenance points and Volvo's auto engine shutdown feature. With outstanding fuel efficiency this durable and reliable machine secures your costs and increases your uptime.

Low fuel consumption

The Volvo engine and hydraulics together offer superior fuel efficiency. The standard auto idle feature helps to reduce your fuel consumption even further and increase your profits.



Auto engine shutdown

A unique offering from Volvo, the engine stops automatically after a preselected idle time, lowering fuel costs and noise. A stopped hour meter reduces maintenance costs and increases the resale value of the machine.



MATRIS and VCADS Pro

By working with your dealer and using Volvo MATRIS software you can analyze operator behavior to improve efficiency, boost productivity and reduce your fuel and maintenance costs. Volvo also offers the VCADS Pro diagnostic system, making it easy to control your machine.



Durability and reliability

The EW60E is designed with the same high quality as all Volvo machines, including robust transmission system and axles, so you can be assured it's durable and reliable on your job site. You can depend on your machine to perform and work hard for peace of mind.





SERVICEABILITY



Keep your machine up and running with a number of features combined to increase machine availability and reduce downtime. Ground level service access, including great access to the main control valve, convenient greasing points, a large tool box in the lower structure and an easy to clean cooling unit all reduce service time and maintenance costs. Check service intervals easily through the in-cab screen, which shows reminders when maintenance is needed.



ATTACHMENTS VERSATILITY



The machine's attachment can be easily changed to save time and costs. Its design, hydraulics, piping and in-cab switches combined with the Volvo attachments range allows the EW60E to take on a variety of tasks. Volvo attachments work in harmony with the machine to deliver maximum productivity.

One machine, many job sites

Volvo offers a wide range of durable attachments that are suitable for any job site, including utilities, building, agriculture, landscaping and forestry. Volvo attachments are an integrated part of the excavator for which they're intended – delivering maximum productivity and versatility.

Quick coupler

Both the mechanical and the hydraulic quick couplers allow a complete range of buckets to be changed quickly and efficiently.



Buckets

A complete range of buckets from general purpose reinforced buckets to ditching buckets, allow the machine to work on many job sites for a wide range of applications. The durable buckets can work in loose gravel, crushed rock, dirt and soil.



Breaker

Volvo's durable hydraulic breakers have been designed for ultimate compatibility with Volvo excavators. The wide range of breaker tools (or bits) has been built to break all kinds of materials and combines excellent performance with low noise and vibration levels.



Thumb

Designed to work with both Volvo direct fit buckets and quick coupler, the Volvo thumb makes many tasks possible, including piling, placing, loading, lifting and carrying.



A compact machine with big potential

BOOSTED PERFORMANCE



Do more in less time with outstanding combined digging efforts, powerful travel force, fluid swing force and optimal lifting capacity.

Smooth operation

Smooth combined operations means you can make very accurate and precise movements.

MATRIS/VCADS Pro

Volvo MATRIS analyses operator behaviour, improving efficiency and productivity. VCADS Pro helps to control your machine.

ATTACHMENT VERSATILITY



The Volvo attachments range allows the machine to take on a variety of tasks for a wide range of jobs and applications.

Powerful Volvo Stage IIIB / Tier 4 final engine

For the ultimate combination of power and performance, the engine helps to push through challenging conditions.

Auto engine shutdown

The auto engine shutdown provides lower fuel costs, less noise, much lower maintenance costs and a greater resale value.





LARGER CAB

A comfortable working space results in better operation, increasing production and reducing fatigue.

Ease of control

The keypad groups all controls on the right hand side and the LCD screen displays all machine information for access to functions.

Operator convenience

Ample storage space in the cab is available for operator comfort and convenience.

SERVICEABILITY

Ground level service access, including great access to the main control valve, convenient greasing points and easy to clean cooling unit reduce service time.

Wheeled performance

A top speed up to 30km/h and the four wheel drive allow you to go on and off-road for better mobility.

CUSTOMER SUPPORT AGREEMENTS

Customer Support Agreements offer preventive maintenance, total repairs and a number of uptime services.

Adding value to your business

Being a Volvo customer means having a complete set of services at your fingertips. Volvo can offer you a long-term partnership, protect your revenue and provide a full range of customer solutions using high quality parts, delivered by passionate people. Volvo is committed to increasing the positive return on your investment and maximising uptime.



Complete Solutions

Volvo has the right solution for you. So why not let us provide all your needs throughout the whole life cycle

of your machine? By listening to your requirements, we can reduce your total cost of ownership and increase your revenue.



Genuine Volvo Parts

Our attention to detail is what makes us stand out. This proven concept acts as a solid investment in your machine's future. Parts are extensively tested and approved because every part is vital for uptime and performance. Only by using Genuine Volvo Parts, can you be sure that your machine retains the renowned Volvo quality.



Service Network

In order to respond to your needs faster, a Volvo expert is on their way to your job site from one of our Volvo facilities. With our extensive infrastructure of technicians, workshops and dealers, Volvo has a comprehensive network to fully support you using local knowledge and global experience.





CUSTOMER SUPPORT AGREEMENT



The range of Customer Support Agreements offer preventive maintenance, total repairs and a number of uptime services. Volvo uses the latest technology to monitor machine operation and status, giving you advice to increase your profitability. By having a Customer Support Agreement you are in control of your service costs.

Volvo EW60E in detail

Engine

The new engine which provides excellent performance is equipped with a four-cylinder, vertical, electronic controlled high pressure fuel injectors, four liter in-line turbo charger, air-to-air intercooler and water cooled diesel engine type. This engine fully meets the demands of the latest Tier 4f (Stage IIIB) emissions regulations.

Engine	Volvo D2.6H	
Max power at	r/s / r/min	40 / 2 400
Net (ISO9249/SAEJ1349)	kW	45.2
Gross (ISO 14396/SAE J1995)	kW	47.3
Max. torque	Nm / r/min	221.6 / 1 500
No. of cylinders		4
Displacement	l	2.615
Bore	mm	87
Stroke	mm	110

Electrical system

Voltage	V	12
Batteries	V	1 x 12
Battery capacity	Ah	100
Alternator	V / A	12 / 90
Start motor	V / kW	12 / 2.5

Undercarriage

Drive train: One big variable axial-piston motor on the two-step Power Shift gearbox gives power to front and rear axles.

Framework: All-welded robust torsion box frame.

Front axle: Robust excavator axle with automatic or operator controlled front axle oscillation lock.

Oscillating	°	4.8
Oscillating with mudguards	°	4.8
Tire	type	1200-165 12PR
Max. tractive force (net)	kN	29
Travel speed, on road *	km/h	30
Travel speed, on road *	km/h	20
Travel speed, off road	km/h	10
Min. turning radius	m	5.1

* depending on local regulations

Sound Level

Sound level in cab according to ISO 6396	LpA dB(A)	78
External sound level according to ISO 6395 and EU Noise Directive 2000/14/EC	LwA dB(A)	97

Swing system

No need for gear oil replacement

The lubricating system uses hydraulic operation oil for the reduction gear, eliminating the need for gear oil replacement.

Built-in parking brake

Parking brake can be built into the hydraulic motor, enabling safer parking on an incline.

Shockless function

Shockless relief is standard equipment to enable smooth traversing.

Max. swing speed	rpm	9.5
Max. swing torque	kNm	11.6

Hydraulic system

Open-center, negative hydraulic system providing accurate controllability.

The following working modes are included in the system:

Parking mode (P): Parking position for optimal safety.

Travel mode (T): Engine speed is controlled by travel pedal stroke and mode selection switch for low fuel consumption and noise. Work equipment are not able to move at this mode for optimal safety.

Working mode (W): Full working flow with adjustable engine rpm for normal working and best speed utilisation.

Hydraulic pumps

Main pump

Type	Variable-displacement pump	
Max. flow	l/min	2 x 60

Pilot pump

Type	Gear pump	
Max. flow	l/min	1 x 21.4

Swing + steering pump

Type	Low noise gear pump	
Max. flow	l/min	1 x 38.9

Relief valve setting

Implement	MPa	22.5
Travel system	MPa	22.5
Swing system	MPa	18.6
Pilot System	MPa	3.13

Hydraulic cylinders

Boom		1
Bore x Stroke	ø x mm	110 x 707
Arm		1
Bore x Stroke	ø x mm	90 x 813
Bucket		1
Bore x Stroke	ø x mm	80 x 660
Dozer blade		1
Bore x Stroke	ø x mm	105 x 230
Boom swing		2
Bore x Stroke	ø x mm	90 x 570

Brakes

Service brakes: servo-hydraulically manoeuvred self-adjusting wet multidiscs with two separate brake circuits.

Parking brake: negative wet disc in gear housing, spring applied and pressure released.

Digging brake: service brake with mechanical lock system.

Security system: The 2-circuit travel brakes are supplied with two accumulators in the event of failure in the service brake system. (Option only)

Total machine weights

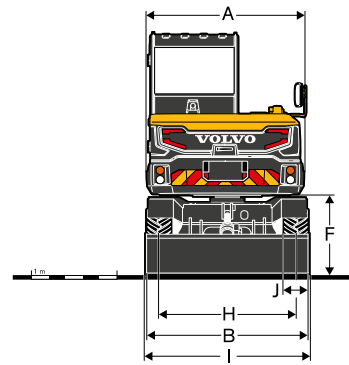
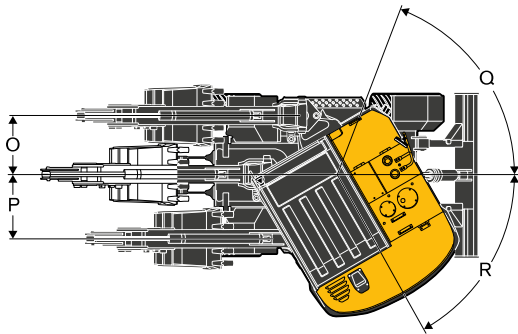
Machine with 2.9m boom, 1.6m arm, 0.187m ³ bucket, standard counterweight, dozer blade	kg	5 622
---	----	-------

Service refill capacities

Fuel tank	l	110
Hydraulic system, total	l	120
Hydraulic tank	l	76
Engine oil	l	11
Engine coolant	l	10
Transmission	l	1.7
Axel differential: (Axel housing)		
Front axle	l	6.3
Rear axle	l	8

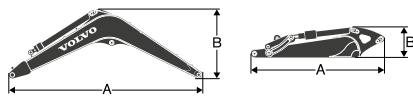
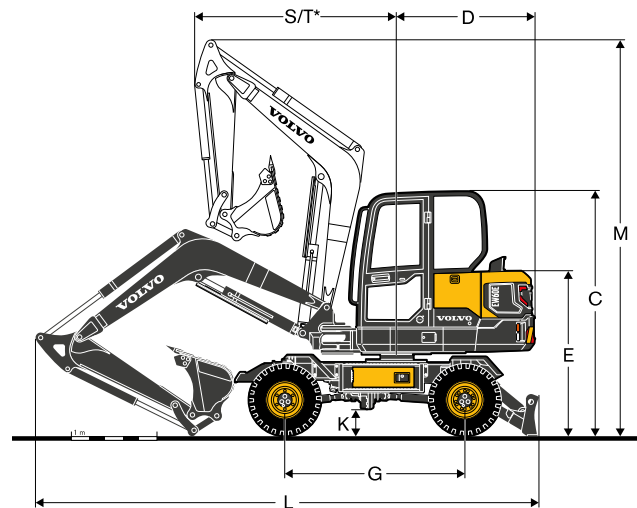
Specifications

DIMENSIONS

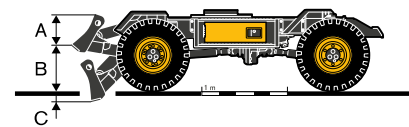


Machine

Boom	m	2.9
Arm	m	1.6
A Overall width of upper structure	mm	1 845
B Overall width	mm	1 930
C Overall height of cab	mm	2 855
D Tail swing radius	mm	1 650
E Overall height of engine hood	mm	1 901
F Counterweight clearance	mm	960
G Wheel base	mm	2 100
H Tread width	mm	1 595
I Dozerblade width	mm	1 930
J Tire width	mm	305
K Min. ground clearance	mm	295
L Overall length	mm	5 869
M Overall height of boom raise	mm	4 599
S Front swing radius	mm	2 352
T* Front swing radius(Max. offset)	mm	1 386
O Boom swing distance	mm	756
P Boom swing distance	mm	863
Q Boom swing angle	°	70
R Boom swing angle	°	60



		Boom		Arm	
		m	2.9	1.6	
A	Length	mm	3 008	2 102	
B	Height	mm	1 159	488	
	Width	mm	336	300	
	Weight	kg	349	206	



		Dozer blade	
A	Height	mm	465
	Width	mm	1 930
B	Lifting height	mm	440
C	Digging depth	mm	140

Boom * Includes cylinder, piping and pin, excludes boom cyl. Pin
 Arm * Includes cylinder, linkage and pin

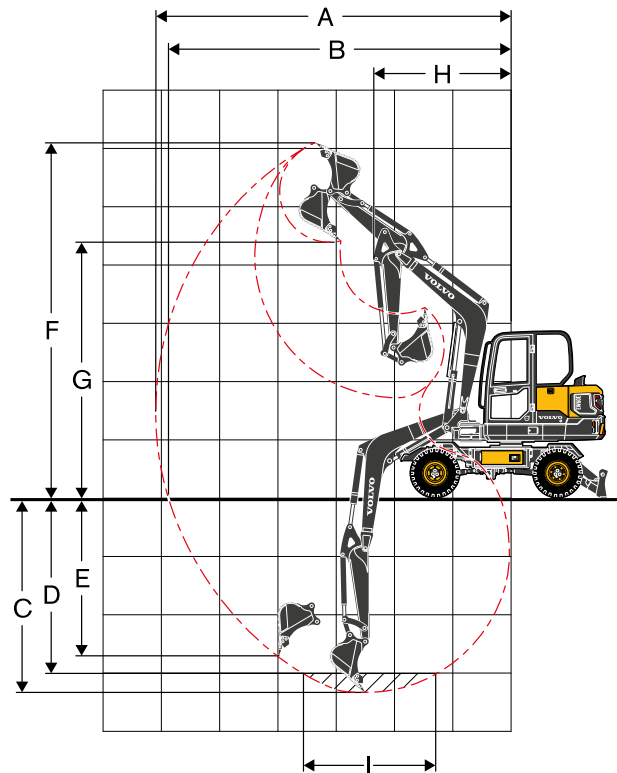
Specifications

WORKING RANGES

Description	Unit	
Boom	m	2.9
Arm	m	1.6
A Max. digging reach	mm	6 024
B Max. digging reach on ground	mm	5 810
C Max. digging depth	mm	3 292
D Max. digging depth (l=2 440 mm level)	mm	2 905
E Max. vertical wall digging depth	mm	2 368
F Max. cutting height	mm	6 007
G Max. dumping height	mm	4 443
H Min. front swing radius	mm	2 350

DIGGING FORCES WITH DIRECT FIT BUCKET

Breakout force (bucket)	SAE J1179	kN	37.7
	ISO 6015	kN	43.3
Tearout force (arm)	SAE J1179	kN	28.2
	ISO 6015	kN	28.8
Rotation angle, bucket		°	196



LIFTING CAPACITY EW60E

Lifting capacity at the arm end without bucket.
For lifting capacity including bucket. Simply subtract actual weight of the direct fit bucket or the bucket with quick coupler from the following values.

	Lifting hook related to ground level	1.0 m		2.0 m		3.0 m		4.0 m		5.0 m		Max. reach		
		Along UC	Across UC	Along UC	Across UC	Along UC	Across UC	Along UC	Across UC	Along UC	Across UC	mm		
Boom : 2.9 m	5.0 m kg											*1 520	1 470	3 449
Arm : 1.6 m GP	4.0 m kg							*1 520	1 170			*1 270	980	4 421
Shoe : Wheel	3.0 m kg							*1 610	1 150			*1 190	810	4 947
CWT : 350 kg	2.0 m kg					*2 540	1 690	*1 840	1 100	*1 530	780	*1 200	740	5 190
Machine: Front direction	1.0 m kg					*3 030	1 580	*2 040	1 050	*1 570	770	*1 280	720	5 197
Dozer blade: Down	0.0 m kg			*2 110	*2 110	*3 040	1 540	*2 070	1 030			*1 470	760	4 969
	-1.0 m kg	*3 000	*3 000	*4 060	3 020	*2 650	1 540	*1 800	1 020			*1 420	890	4 464
	-2.0 m kg			*2 450	*2 450	*1 680	1 590					*1 180	*1 180	3 530
Boom : 2.9 m	5.0 m kg											*1 520	1 380	3 449
Arm : 1.6 m GP	4.0 m kg							*1 520	1 100			*1 270	920	4 421
Shoe : Wheel	3.0 m kg							*1 610	1 080			*1 190	760	4 947
CWT : 350 kg	2.0 m kg					*2 540	1 580	*1 840	1 030	1 410	740	*1 200	690	5 190
Machine: Front direction	1.0 m kg					*3 030	1 480	1 950	990	1 390	720	*1 280	680	5 197
Dozer blade: Up	0.0 m kg			*2 110	*2 110	*3 040	1 440	1 920	960			1 390	710	4 969
	-1.0 m kg	*3 000	*3 000	*4 060	2 770	*2 650	1 440	*1 800	960			*1 420	830	4 464
	-2.0 m kg			*2 450	*2 450	*1 680	1 480					*1 180	1 180	3 530
Boom : 2.9 m	5.0 m kg											*1 520	1 470	3 449
Arm : 1.6 m GP	4.0 m kg							*1 520	1 170			*1 270	980	4 421
Shoe : Wheel	3.0 m kg							*1 610	1 150			*1 190	810	4 947
CWT : 350 kg	2.0 m kg					*2 540	1 690	*1 840	1 100	*1 530	780	*1 200	740	5 190
Machine: Rear direction	1.0 m kg					*3 030	1 580	*2 040	1 050	*1 570	770	*1 280	720	5 197
Dozer blade: Down	0.0 m kg			*2 110	*2 110	*3 040	1 540	*2 070	1 030			*1 470	760	4 969
	-1.0 m kg	*3 000	*3 000	*4 060	3 020	*2 650	1 540	*1 800	1 020			*1 420	890	4 464
	-2.0 m kg			*2 450	*2 450	*1 680	1 590					*1 180	*1 180	3 530
Boom : 2.9 m	5.0 m kg											1 370	1 380	3 449
Arm : 1.6 m GP	4.0 m kg							1 100	1 100			920	920	4 421
Shoe : Wheel	3.0 m kg							1 080	1 080			760	760	4 947
CWT : 350 kg	2.0 m kg					1 570	1 580	1 030	1 030	740	740	690	690	5 190
Machine: Rear direction	1.0 m kg					1 470	1 480	990	990	720	720	680	680	5 197
Dozer blade: Up	0.0 m kg			*2 110	*2 110	1 430	1 440	960	960			720	710	4 969
	-1.0 m kg	*3 000	*3 000	2 740	2 770	1 430	1 440	960	960			830	830	4 464
	-2.0 m kg			*2 450	*2 450	1 470	1 480					1 180	1 180	3 530

Notes: 1. The above loads are in compliance with SAE J1097 and ISO 10567 Hydraulic Excavator Lifting Capacity Standards. 2. Rated loads do not exceed 87% of hydraulic lifting capacity or 75% of tipping load. 3. Rated loads marked with an asterisk (*) are limited by hydraulic capacity rather than tipping load.

Equipment

STANDARD EQUIPMENT

Engine

Low-emission Volvo T4 diesel engine
Standard cooling system
Two-stage air filter
Fuel filter and water separator
Alternator, 90 A

Electric/Electronic control system

Safe engine start function
Automatic idling system
Halogen working lights;
Cab-mounted 1 (Front), Boom-mounted 1 (LH)
Battery, 12 V / 100 Ah
Start motor, 12 V / 2.5 kW
Monitor and keypad
Master electrical disconnect switch
Travel alarm

Hydraulic system

Automatic two speed travel motors
Cylinder cushioning
Hydraulic fluid mineral 46
Travel motor (30km/h)
Hydraulic piping:
Breaker & shear (X1 Double Acting)

Cab and interior

Cab
Fabric operator seat with suspension
Seat belt, 2 inch retractable
Control joystick
Radio with MP3/AUX
Master key
Hour meter (non analog)

Frame

Rearview mirror
350kg counterweight
Under cover
Dozer blade

Undercarriage

Tyre: 12.00-16.5 12PR

Digging equipment

Boom: 2.9m, Arm: 1.6m
Offset boom
Linkage

Service

Tool kit-daily maintenance

OPTIONAL EQUIPMENT

Engine

Water separator (With heater)
Engine auto shut down

Electric/Electronic control system

Fuel filler pump: 35 l/min, with automatic shut-off
Halogen extra working lights;
Cab-mounted 1 (Rear)
Boom-mounted 1 (RH)
Caretrack
Rotating warning beacon
Electric pilot control change
Rearview Camera
Electric dozer blade switch on joystick
LED Light

Hydraulic system

Hydraulic piping:
Breaker (X1 Single Acting)
Slope & rotator (X3)
Grapple
Quick coupler
Hose rupture valve for boom, arm
Overload warning device
Hydraulic oil, ISO VG 32, 68
Hydraulic oil, biodegradable 46
Hydraulic oil, longlife oil 32, 46, 68
Travel motor (20km/h)

Cab and interior

Heater and air-conditioner
Fabric operator seat with suspension with heater
PVC operator seat with suspension
Control joystick, X3 proportional
Radio with MP3/AUX/Bluetooth
Mechanical hour meter
Cab mounted FOG (Falling Object Guard)
FOPS (Falling Object Protection Structure)
Sun screen, front/roof
Safety net

Digging equipment

Fixed boom

Service

Tool kit, full scale
Spare parts

SELECTION OF VOLVO OPTIONAL EQUIPMENT

Electric dozer blade switch on joystick



Rear view camera



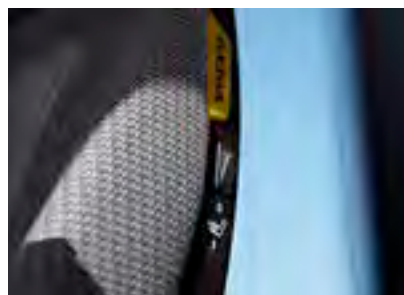
Auxiliary hydraulic piping (X3)



LED Light



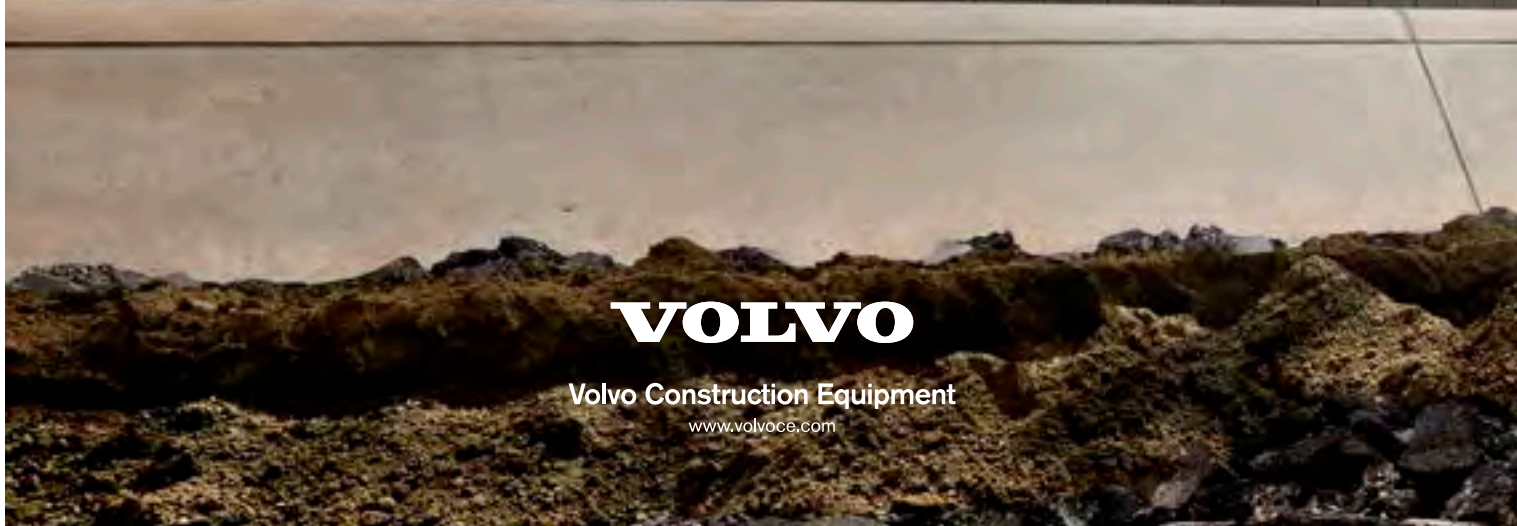
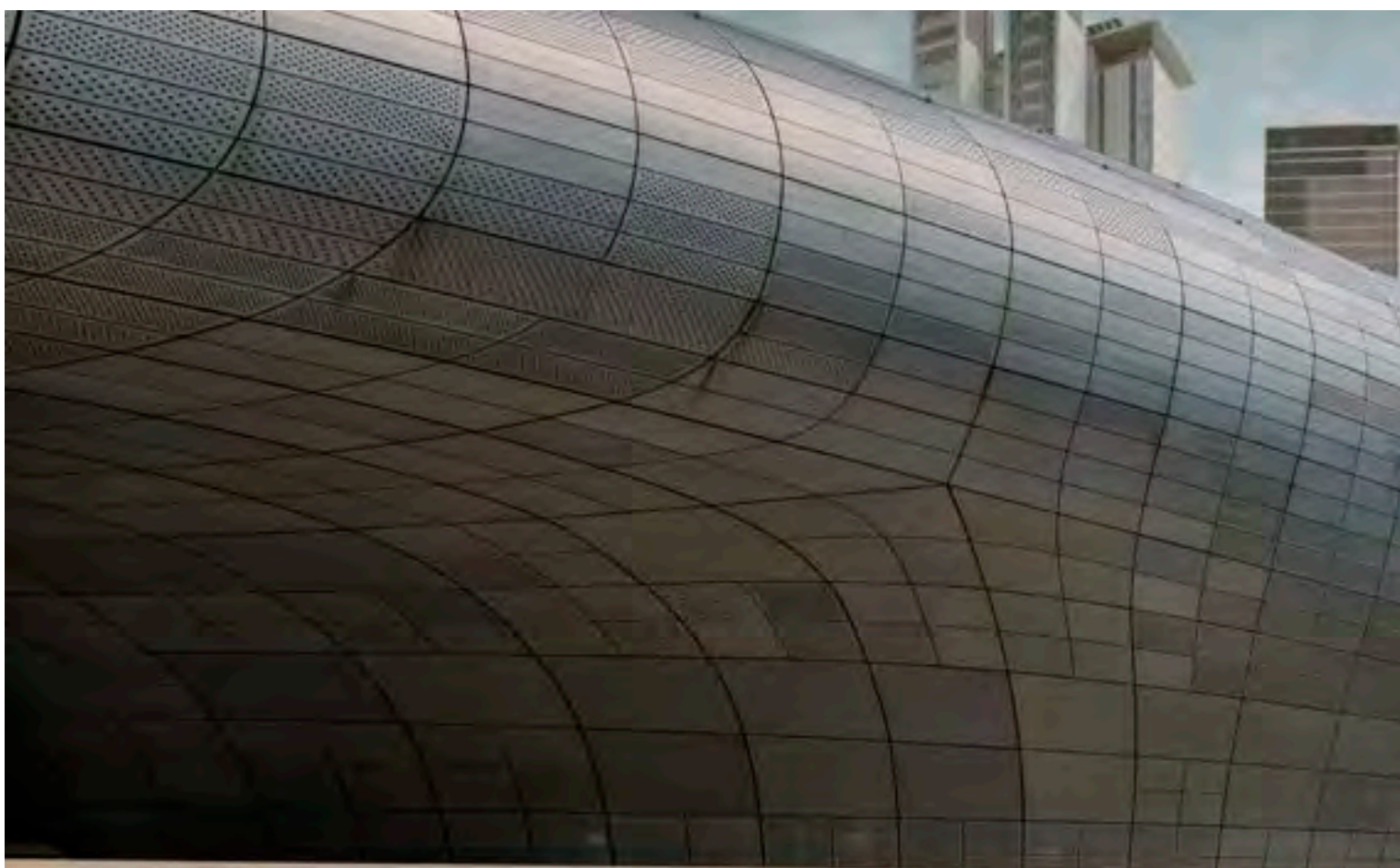
Heated seat



Fixed boom



Not all products are available in all markets. Under our policy of continuous improvement, we reserve the right to change specifications and design without prior notice. The illustrations do not necessarily show the standard version of the machine.



VOLVO

Volvo Construction Equipment

www.volvoce.com